



**SYSCOM 365 FURNITURE
FOR
MICROSOFT DYNAMICS 365**



OVERVIEW

SYSCOM 365 FURNITURE

Syscom 365 Furniture is a specifically designed App for the furniture industry, which works in conjunction with Microsoft Dynamics 365.

The fully integrated app combines the functionality of Dynamics 365 including Finance, Supply Chain Management, Sales, Field Services, Customer Service, HR and Marketing, with modifications designed for furniture manufacturers.

Syscom 365 Furniture offers solutions to common industry problems. It has been designed by Syscom working in conjunction with the furniture industry, bringing product configuration, price banding and loading options to Dynamics 365 to make it the perfect app for furniture manufacturers.

The app has over 29 generic modifications specific to the furniture industry and are standard enough to fit most furniture companies. This means it is suitable for all kinds of furniture businesses, including:

- buying furniture
- furniture manufacturing
- distribution of furniture products

Syscom 365 Furniture encapsulates all the features of existing furniture systems and is built upon the already outstanding features and stability of Dynamics 365 to create a product that simplifies everyday challenges.



PRODUCT CONFIGURATION

Everything you need to start and finish a product order is together in one place in our product configurator functionality.



PICK TO LOAD

Select several works orders and group them together for production whilst changing the delivery date on the works orders & sales order lines automatically.



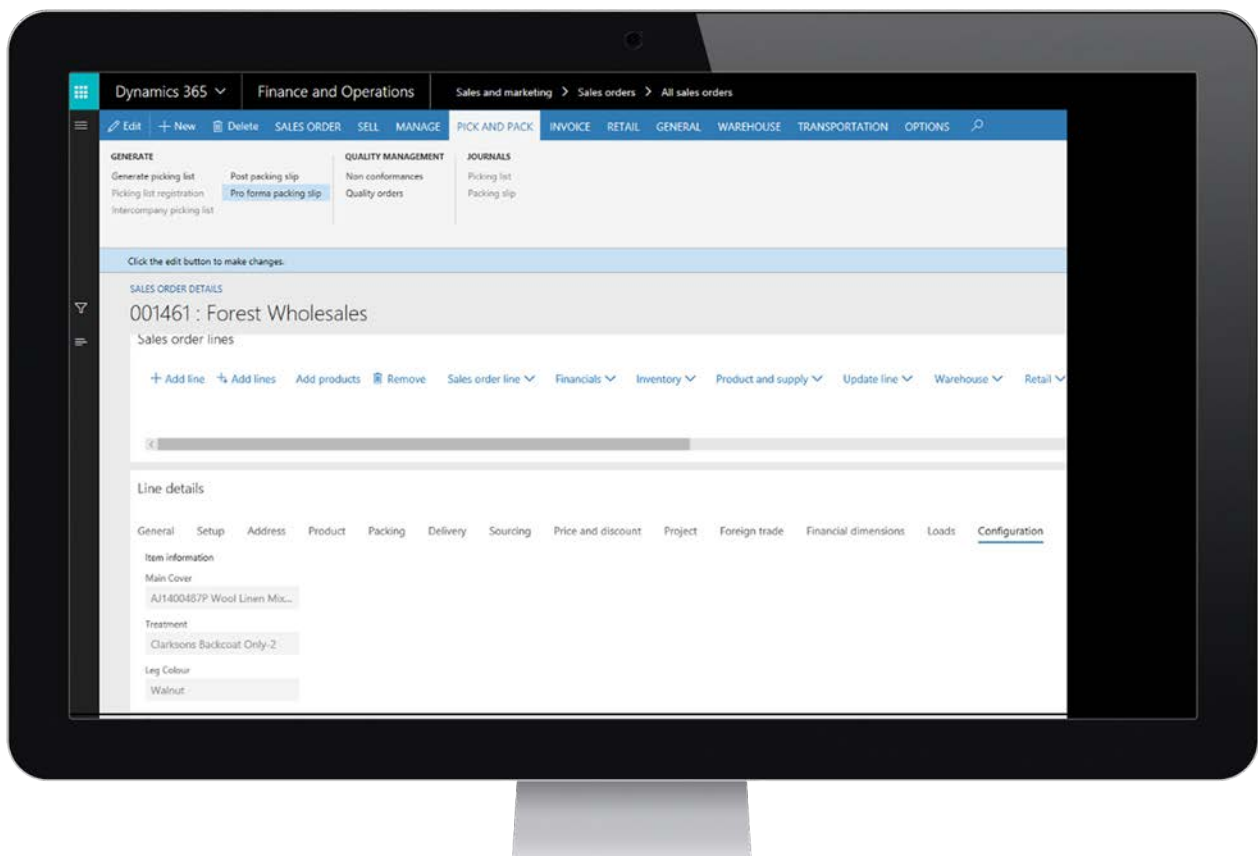
PRICING FEATURES

The Syscom 365 Furniture App brings price banding and cost banding features to Dynamics 365.

DYNAMICS 365 FOR FURNITURE

Syscom 365 Furniture has taken the standard ERP system to a whole new exciting level and through a single application, allows you to manage and control furniture manufacturing operations with precision, including:

- Creating distinct product variants that each have a unique bill of materials (BOM)
- Job costing and capacity planning
- Optimising production planning
- Quick view item configuration
- Manufacture by location
- Customisation and customer preferences
- Production and delivery schedules
- Manufacturing & dispatch planning
- Integrated financial costing models
- Full EDI integration
- Multiple pricing structures
- Load scheduling
- Shop floor data capture
- Barcode and label management
- Travel documentation with peel offs
- Tracked fire certification
- Can be used in-cloud or on-premise



KEY FEATURES



WORKS ORDER TICKET

This produces a works order ticket from the works order with barcodes for piece work scanning.



PIECEWORK SCANNING

Add unique operations to route to allow for piecework scanning and completion of open operations.



MATERIAL AND FABRIC RESTRICTION

For example, dye batch and pattern matching.



BULK PICKING

The App allows items to be bulk picked, such as fabric.



DISPATCH SCANNING

This allows a file to be scanned into D365 showing which van the item has been dispatched on, and automatically prepares the sales order line for dispatch.



PRODUCT SUPPLEMENTARY INFORMATION FIELDS

Different tabs and fields can be displayed on the item record based on predefined sets of information.



UID FOR STOCK TRANSACTIONS

This allows batch specific unique identification data to be associated with a D365 batch-controlled item, so information such as fire certificates or dye batch numbers will follow the item through all the stock movements.



BOM & ROUTE TESTING

This allows users to quickly test the results of a configured model BOM and route, without which the user would have to create a sales order line to test each option worked correctly.

PRODUCT CONFIGURATOR



REDUCE PRODUCT MODELS

The product configurator helps to reduce your number of product models.



VIEW DETAILS FROM SALES ORDER

View the configuration details of an item within the sales order screen.



IMPROVE ACCURACY

Get sales orders right first time and automate work orders without delay.

How complex your area of furniture manufacturing is can depend on the range of the ever-increasing choices you offer. The combinations of options, fabrics and dye batches, stretch qualities, sizes, seating patterns and colours can often be immeasurable.

You may have a problem with orders being taken that you just don't want to make, or you get a recall on fabric or fire retardant and you struggle to know where it was used. All of this can be catered for with Syscom 365 Furniture's Product Configurator.

In Dynamics 365, the product is configured when an order is placed. Syscom 365 Furniture enhances the Dynamics 365 configurator. The modifications provide seamless integration of components and operations into the product configurator. It provides a smooth route from configuration to billing materials, to route through manufacture.

Get everything you need to start and finish an order in one place.

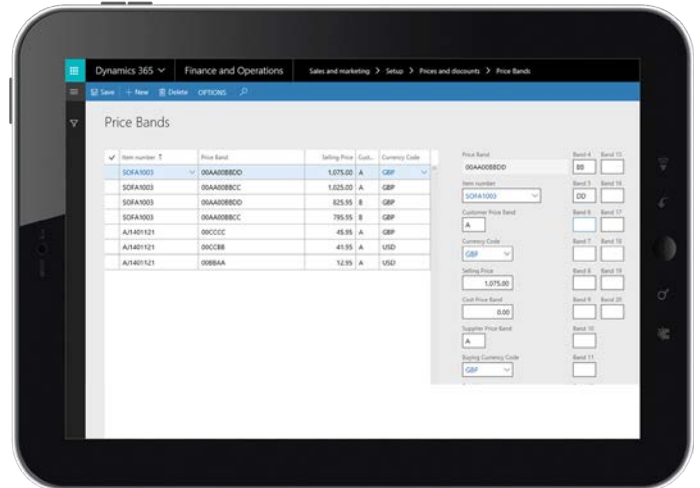
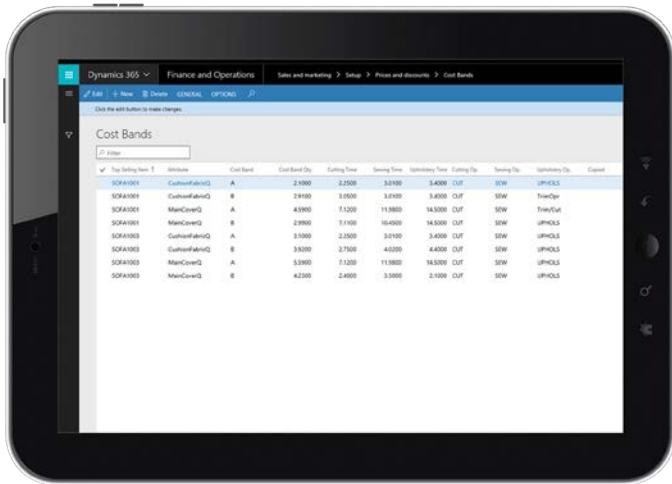


Get an instant sales order - Once a product has been configured, it will calculate a price for a Sales Order based upon the options chosen, taking into account the material used and all variants which may affect the price.



Find any errors during configuration - The configurator allows you to view which BOM and route information would be created based on a model design and the attributes chosen. It shows you if a design is going to work and can also be used to find any errors in the model.

PRICING FEATURES



PRICE BANDING

The price banding functionality helps set up prices and costing of a furniture range with options for customisation. For example, fabric, size, type and details of furniture preferences, number of seats, shape, reclining options, leather protectors, feet, etc. Syscom 365 Furniture will build the product for you, giving an end-item and a price for a sales order.



CUSTOMER PRICING

Use different prices for different customers.



TEMPORARY PRICING

An option for temporary pricing.



DIFFERENT CURRENCIES

Caters for different currency prices.

COST BANDING

Cost band functionality allows users to maintain a component, such as fabric, where the fabric item would be used across many different styles of products. It allows each product to have its own consumption of that fabric. If consumption or cost increases over time, its maintained in one place and applied to all production orders, BOM's and sales orders that have not been started in the production process.

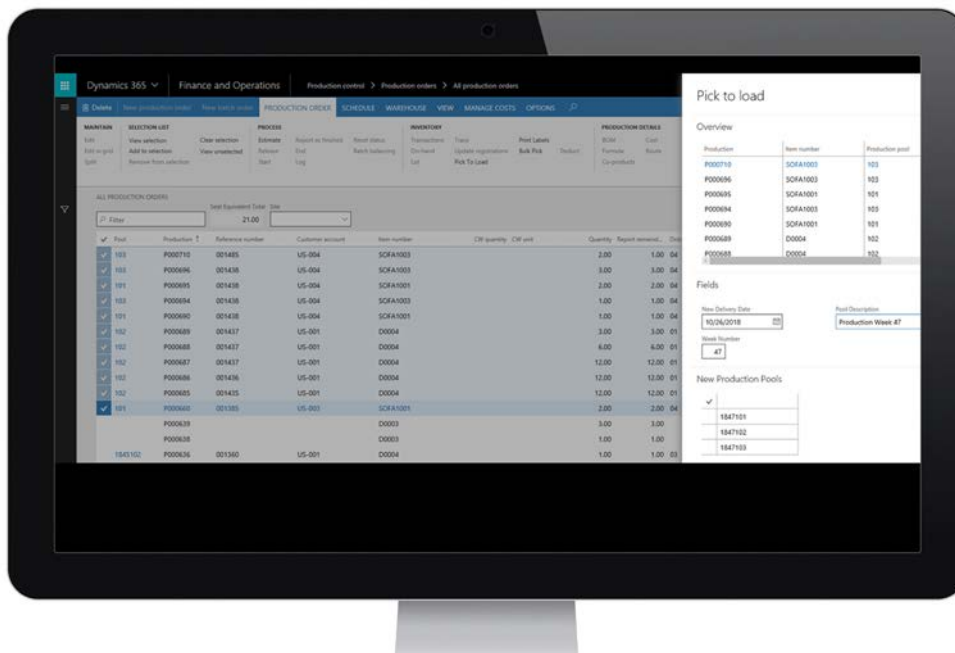
Cost band operations allows different route operations to be selected dependent on the item cost band for normal orders.

PICK TO LOAD

The pick to load feature allows production orders to be grouped, which means work can be segregated into production weeks.

The functionality works by selecting works orders, then filtered by item, client, delivery date or sales order, and grouping them.

For a production controller, the production pool can be filtered by year or production week – and you can see the filtered view of the specific production week.



EDI FUNCTIONALITY

Orders come in in different forms and this add-on processes the imported data into the receiving system. It allows Dynamics 365 to receive a file from customers and translate it into a sales order with configured lines and BOM's. This reduces human error and allows you to load your orders in a short period of time in the format you need.

The benefit of the EDI functionality that exists within Syscom 365 furniture is that it will create a sales order automatically but also works with configured items – it can validate configuration and go on to create a works order for each line on sales orders.

This functionality allows each customer to have multiple EDI import types, their own field mappings and their own delimiters and gives customers a lot of flexibility.

