

Inventory Management

How profitable your organisation could potentially be can be measured by how accurately you determine the variance between your demand and supplier reliability. Knowing what stock you should have to hand along with the flow of inventory to meet your demand patterns will make sure you are giving your customers the service levels they seek, thus, altering the dynamics of either side will create additional profit.

The Inventory Management Module allows you to control inventory, manage your supply chain effectively and collaborate with your suppliers & customers efficiently. It has been designed to give you a 360° visibility window into your supply chain including stock movement in all locations, irrespective of whether you have a distributed manufacturing process or a single site.

It should be this easy, yet for many companies being able to measure demand patterns or supplier reliability is not an easy task. An estimate based on last year's performance is the normal means of determining what stock should be held for a given demand pattern.

Improved customer service through accurate stock control and analysis

Knowing the predictability of your demand to item level along with the reliability of your supply, determines the correct level of stock you should be holding to satisfy customer service levels.

ApparelX also highlights your inventory pinch points and replenishment needs and shows impact analysis of stock deliveries on customer orders.

Accurate view of stock

ApparelX incorporates attribute maintenance and matrix functionality ensuring you always have an accurate view of stock.

Flexible stock handling including "one-time" non-stock items, in addition to stock adjustments, transfers, receipts, shipments, production updates and requisitions plus dynamic labelling of stock storage and stock types.



Reporting

ApparelX offers simple and powerful reporting with Actuate® reporting facilities and Microsoft SQL reporting services.

Global access

Multi-location, multi-company, multi-division, multi-currency and multi-lingual functions.

ApparelX handles unlimited warehouses, keeping all dynamic attributes such as quantities, costs, storage structures and pricing by warehouse.

Key business indicators

Analysis on stock movement, slow movers, intuitive re-order levels (MOQ/EOQ), costings sales and usage figures are amongst some of the many key business indicators available in ApparelX.

Costing

ApparelX Inventory Management allows you to keep tight control of cost and supplier performance.

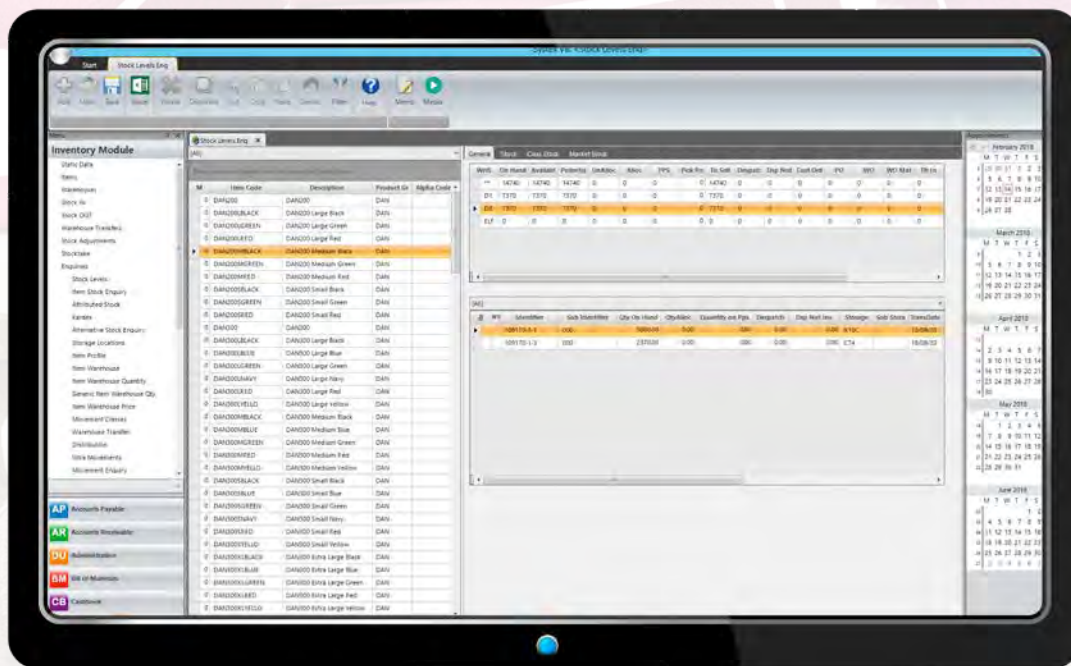
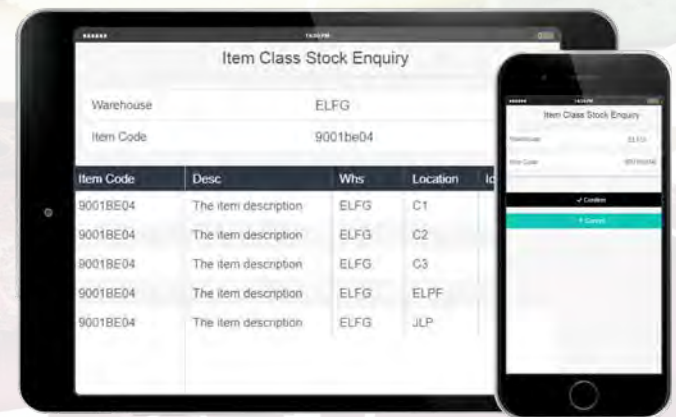
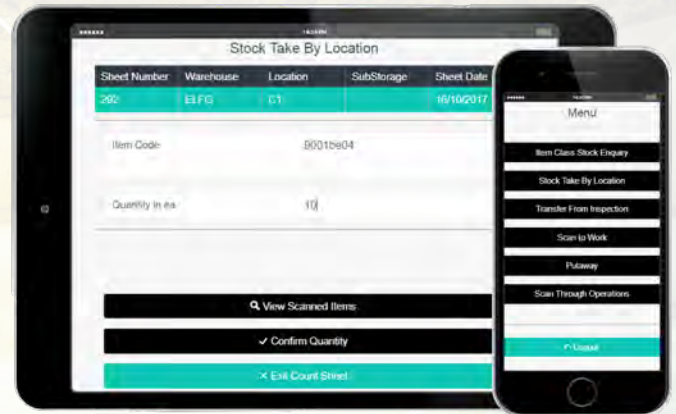
Inventory Management



Inventory Management allows you to:

- Attribute item and price maintenance with unlimited flexibility in amending complex attributed products, for example; style, colour, size
- Handle multiple units of measure both for stock and sales
- Attach documents and images to records for tracking purposes, using the memo function
- Quickly create item variants through the attribute maintenance function
- Track by lot/serial/dye lot and piece
- Have the option of quarantine or inspection of stock on arrival, during WIP or at the finished goods stage
- Use barcoding
- Organise periodic physical inventory procedures including cycle counting and automatic inventory update
- Use manual and automatic stock allocation / reservation at point of order entry or after order acceptance
- Create labels and consolidate manifests.

Mobile Applications:



Instant stock availability enquiry at matrix level, including purchase & works orders, on picking slip and available to sell quantities, all by location/sub location.